

## Vallgornera

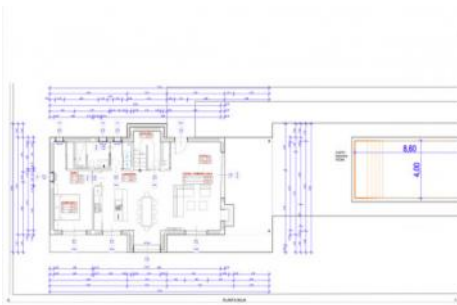
Reference 115373



  
**PORTA MALLORQUINA®**  
Your home. Our passion.

## Fantastic newly-built villa promotion in Vallgonera

constructed area:	212 m <sup>2</sup>	energy certificate:	a
plot area:	750 m <sup>2</sup>		
bedrooms:	4		
bathrooms:	4		
sea view:	-	price:	€ 1,400,000.-



## Vallgornera

### Reference 115373



### Details:

This fantastic, newly-built promotion of 6 villas is situated on the third sea line in Cala Pi. It is under construction using only the highest-quality materials and is presently 70% finished.

All chalets have 2 levels and an 8.6 x 4 metre saltwater pool, and will be handed over key-in-hand including an open fitted kitchen integrated into the living/dining area, and fitted wardrobes in the bedrooms.

Further features will include underfloor heating with heat pump, stone tiles, entrance door of Iroko-wood, double-glazed insulated windows, room-cooling by fancoils and many other extras. These exceptional properties offer a tremendous price/performance ratio.

## Vallgornera

### Reference 115373



### Location & surrounding area:

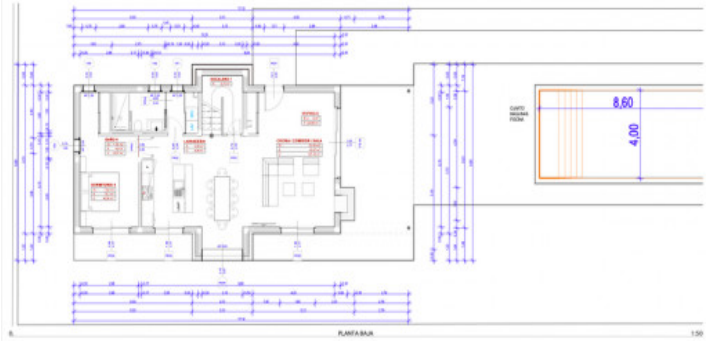
Cala Pi in the municipality of Lluçmajor is mainly the name of the pretty bay and the torrent from which surged the bay. Among divers it is popular for its crystal clear water, among families for its white and fine sand. The little village Cala Pi offers some restaurants and small shops but has remained quiet.

# Vallgornera

## Reference 115373



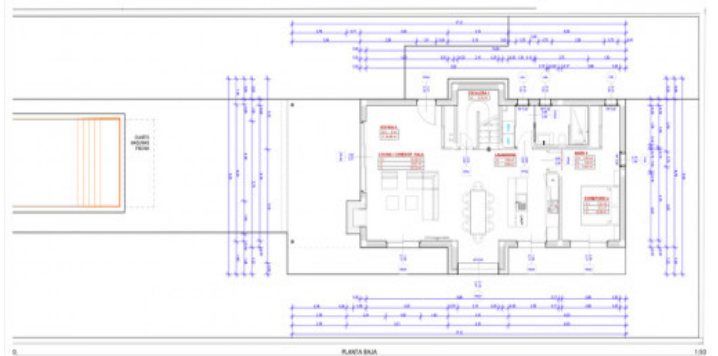
Alternative view of the project



Construction plan



Construction plan



Construction plan

Escala de la calificación energética	Consumo de energía kWh/m² año	Emisiones kg CO <sub>2</sub> /m² año
<b>A</b> más eficiente	<b>22.74</b>	<b>4.81</b>
<b>B</b>		
<b>C</b>		
<b>D</b>		
<b>E</b>		
<b>F</b>		
<b>G</b> menos eficiente		

Energy certificate

All information is correct to the best of our knowledge. Errors and prior sale excepted. This prospectus is purely for information purposes. Only the notarized deed of sale is legally binding.