

**Bonanova**  
Reference 122785



## Apartment for rent in Bonanova - Quiet location with large roof terrace and communal pool

constructed area:	120 m <sup>2</sup>	swimming pool:	✓
bedrooms:	3	energy certificate:	in process
bathrooms:	2		
balcony/terrace:	✓		
sea view:	-	<b>long term rental*:</b>	<b>€ 3,200.-</b>



\* Agency fee: 1.7 monthly rent plus 21% VAT  
Monthly rental fee - Rentals with contract period of minimum six months.

# Bonanova

## Reference 122785



### Details:

Apartment for Rent in Bonanova – Quiet Residential Complex with Large Rooftop Terrace and Communal Pool

This well-maintained apartment is located in a beautiful and quiet residential complex in the sought-after area of Bonanova. The community offers a large swimming pool and a pleasant green environment with plenty of privacy.

Bonanova is one of Palma's most desirable residential areas, known for its peaceful atmosphere and excellent infrastructure. Shops, restaurants, international schools, fitness centers, and medical facilities are all nearby. Palma city center and the marina can be reached within just a few minutes.

The apartment features a spacious living room with dining area and direct access to the balcony overlooking the greenery. A spiral staircase leads to the large private rooftop terrace with pergola and outdoor kitchen – perfect for relaxing and entertaining.

The fully equipped kitchen also includes a separate utility room. The property offers 3 bedrooms and 2 bathrooms.

### Additional features:

- Centralized air conditioning
- Central heating
- Large communal pool
- Private rooftop terrace with pergola and outdoor kitchen
- Balcony with green views
- Parking space in the garage with direct elevator access

An ideal apartment for those looking to combine peaceful living in an exclusive location with excellent connections to the city.

# Bonanova

## Reference 122785



### Location & surrounding area:

Due to its elevated location, bordering with the wonderful Parc de Bellver with the famous Bellver castle, the beautiful area of Bonanova provides wonderful views over the whole of the bay of Palma, the open sea and the mountains.

This villa district, although centrally located and with superb connections to the centre of Palma by car or bus, is one of the quietest and most secure districts of Palma. It offers, therefore, the possibility to live in a peaceful area but still be able to easily enjoy all the facilities of the town with its restaurants, bars, cafes and shops.

In addition this neighbourhood itself offers gastronomy, supermarkets, sports locations and clinics, all close by. The shopping centre of Porto Pi, for example, is only a few minutes away by car and offers a huge choice of shops and restaurants. Lovely beaches such as that in Cala Major are also only a few minutes away by car. Bonanova, furthermore, is also ideal for children with the 'Queen's College' which enjoys an excellent reputation internationally.

Bonanova  
Reference 122785



Apartment in Bonanova with rooftop terrace



Community pool



Rooftop terrace with pergola



Living area



Dining area



Kitchen

All information is correct to the best of our knowledge. Errors and prior sale excepted. This prospectus is purely for information purposes. Only the notarized deed of sale is legally binding.

Bonanova  
Reference 122785



Masterbedroom with bathroom en suite



Bedroom



Bedroom



Bathroom en suite



Bathroom



Community pool

All information is correct to the best of our knowledge. Errors and prior sale excepted. This prospectus is purely for information purposes. Only the notarized deed of sale is legally binding.

Bonanova  
Reference 122785



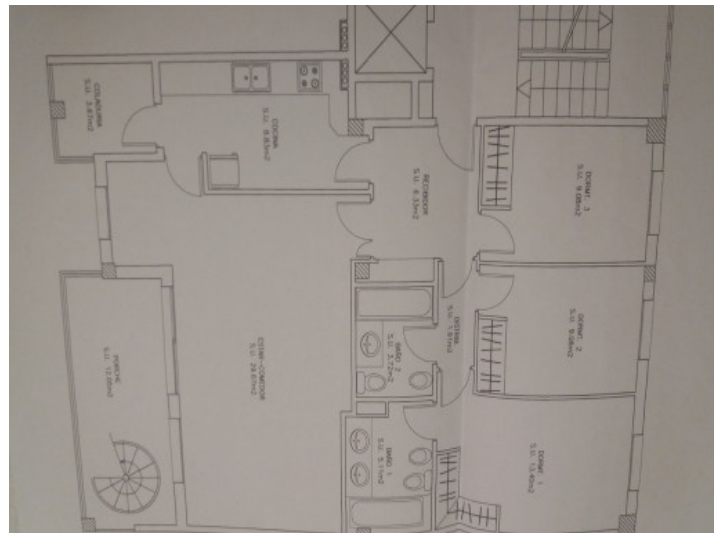
Community pool



Community



Entrance



Construction plan

All information is correct to the best of our knowledge. Errors and prior sale excepted. This prospectus is purely for information purposes. Only the notarized deed of sale is legally binding.

PORTA MALLORQUINA • THERESIENSTR.: 81, 80333 MUNICH  
TEL. +34 971 698 242 • INFO@PORTAMALLORQUINA.COM