

Son Rapinya

Reference 122203



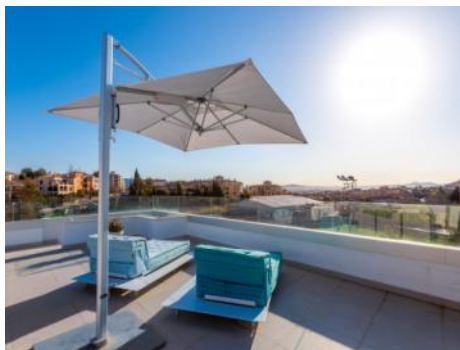

PORTA MALLORQUINA®
Your home. Our passion.

Impressive penthouse with large rooftop terrace near Son Vida

constructed area: 289 m²
bedrooms: 3
bathrooms: 2
balcony/terrace: ✓
sea view: -

swimming pool: ✓
energy certificate: c

price: € 1,250,000.-



Son Rapinya Reference 122203



Details:

This stylish penthouse is located in one of the most exclusive residential complexes in the region, just a few minutes from the center of Palma. Thanks to its close proximity to the renowned Son Muntaner, Son Quint and Golf de Son Vida golf courses, the location is particularly attractive for golf enthusiasts. The beaches of Portals and Illetas and the airport are also within easy reach.

The residential complex impresses with its modern Mediterranean-style architecture and offers the highest level of comfort. Residents enjoy exclusive amenities such as a spacious outdoor pool, a state-of-the-art gym, a sauna and an indoor jacuzzi.

The penthouse itself boasts an intelligent room layout and high-quality fittings:
The living space of approx. 145 sqm offers 3 bedrooms, whereby 2 of the original 4 bedrooms have been combined to create a cozy TV/lounge area. Two modern bathrooms, a fully equipped fitted kitchen and built-in wardrobes offer functionality and comfort at the highest level.

A particular highlight is the spacious sun terrace with outdoor kitchen and an area of approx. 125 sqm - perfect for relaxing or socializing in the open air. An additional covered terrace on the main level extends the living area into the open air.

Double-glazed windows, elegant furnishings, underfloor heating and central air conditioning guarantee a pleasant living atmosphere all year round. A private underground parking space rounds off the offer.

This exclusive property combines modern elegance with a Mediterranean lifestyle in one of the most sought-after locations in Mallorca. Ideal for discerning buyers looking for maximum living comfort combined with first-class infrastructure and leisure facilities.

Son Rapinya

Reference 122203



Location & surrounding area:

Son Rapinya is a growing district in Palma de Mallorca and is characterised by both its proximity to the town, and by its tranquillity and green surroundings. This makes it the ideal residential area for those seeking an urban location together with a natural environment. Its proximity to the centre of Palma, international schools, and 3 golf courses (Son Muntaner, Son Quint and Son Vida) make the area very attractive for families and keen golfers. There are also many other facilities close by including clinics, supermarkets, service stations, tennis clubs, fitness studios, restaurants and diverse other amenities.

Palma's beautiful old town is only 10 minutes away, and the airport can be reached within 15 minutes by car.

Son Rapinya

Reference 122203



Spacious rooftop terrace with city views



Rooftop terrace mit views over Palma



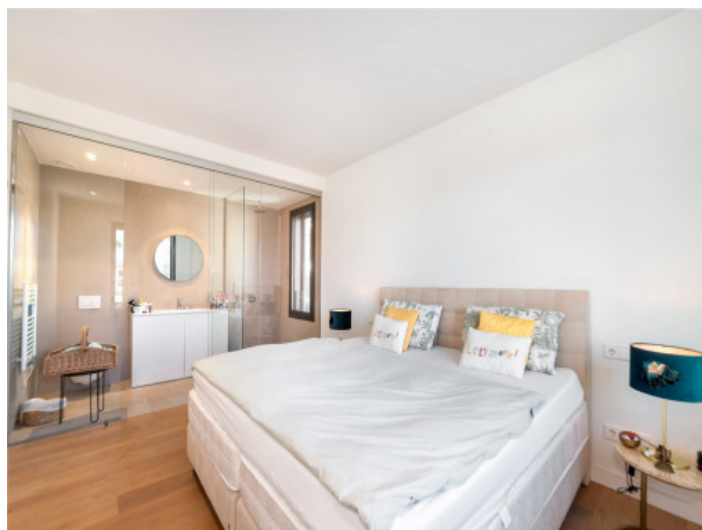
Bright living and dining area with access to the terrace



Open-plan kitchen with modern cooking island



Generous open living and dining space



Master bedroom with en-suite bathroom

All information is correct to the best of our knowledge. Errors and prior sale excepted. This prospectus is purely for information purposes. Only the notarized deed of sale is legally binding.

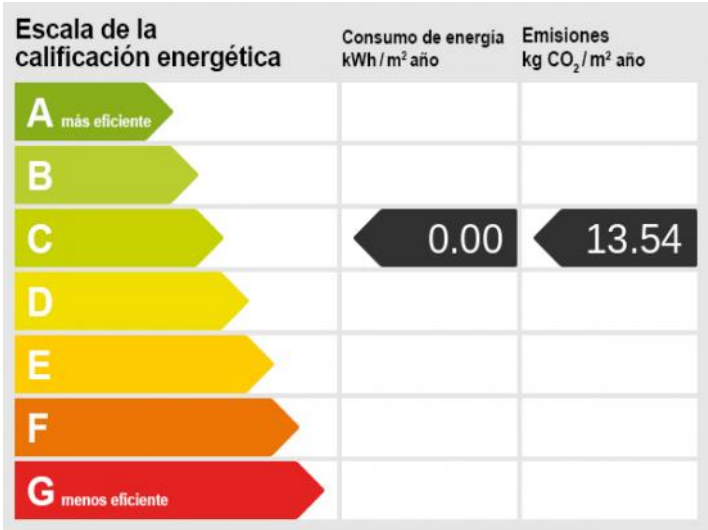
Son Rapinya
Reference 122203



Master bathroom



Large communal pool with sunbathing area



Energy certificate

All information is correct to the best of our knowledge. Errors and prior sale excepted. This prospectus is purely for information purposes. Only the notarized deed of sale is legally binding.