

Paseo Marítimo

Reference 121553G



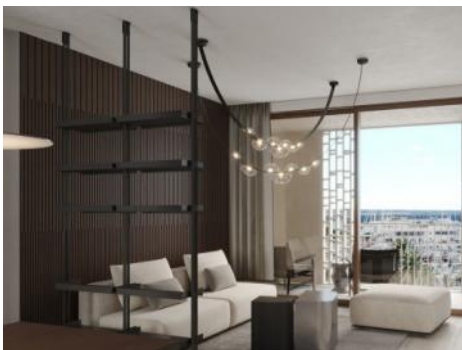

PORTA MALLORQUINA®
Your home. Our passion.

Duplex penthouse-apartment with private pool and roof terrace in Jonquet

constructed area: 298 m²
bedrooms: 3
bathrooms: 3
balcony/terrace: ✓
sea view: -

swimming pool: ✓
energy certificate: in process

price: on request



Paseo Maritimo

Reference 121553G



Details:

In El Jonquet, a hillside neighbourhood that exudes the old-world charm of a former fishing village, a unique construction project with 57 units spread over 3 buildings is currently under construction.

These exclusive residences offer incomparable living comfort for those seeking a special domicile. Thanks to the excellent location, the port of Palma and the famous, lively districts of the city are within easy walking distance.

The duplex penthouse offers a generous constructed area of 297 sqm spread over 2 levels. It includes 3 bedrooms and 3 bathrooms, 2 of which are en suite, and an openly-designed living/dining area creating a spacious and inviting ambience. An absolute highlight is provided by a large private terrace with pool, providing ample space for outdoor leisure activities and flooding the area with natural light.

In addition, the apartment has private parking for 2 cars.

Offered are 2 exclusive equipment lines of the highest quality, both promising an incomparable living experience. In addition, customised upgrade packages allow the apartments to be individually adapted to the requirements of their residents.

XO JONQUET - these park residences offer exceptional comfort and luxury with an impressive range of amenities. These include an exclusive spa and wellness area with indoor and outdoor pools, a fitness room, a private cinema, car wash facility, a golf simulator and a wine cellar. In addition, an in-house service and a community boat are available to offer residents an incomparable living experience.

Paseo Marítimo

Reference 121553G



Location & surrounding area:

The Paseo Marítimo forms the borderline from the capital Palma towards the water and extends on about 6 kilometres from the military port of Porto Pi in the west, along the historic centre, the antique pier, the cathedral till the fisher harbour of Portixol in the east. Whilst some people take the bicycle or the roller blades, others are jogging or simply walk; all of them are enjoying meanwhile the fresh breeze on the waterfront. The promenade of Palma is one of the favoured meeting points for the people of the island and the life not only vibrates during the day. The attractive nightlife offers different kind of hip dancing clubs, fancy pubs, coffee shops and restaurants for each taste. Sunny residential apartment blocks, south orientated, with views to the marinas with its floating yachts, define the image of the Paseo Marítimo.

Paseo Marítimo

Reference 121553G



Community pool



Terrace



Harbour views



Reception entrance area



Living room



Living room

All information is correct to the best of our knowledge. Errors and prior sale excepted. This prospectus is purely for information purposes. Only the notarized deed of sale is legally binding.

PORTA MALLORQUINA • THERESIENSTR.: 81, 80333 MUNICH
TEL. +34 971 698 242 • INFO@PORTAMALLORQUINA.COM

Paseo Marítimo

Reference 121553G



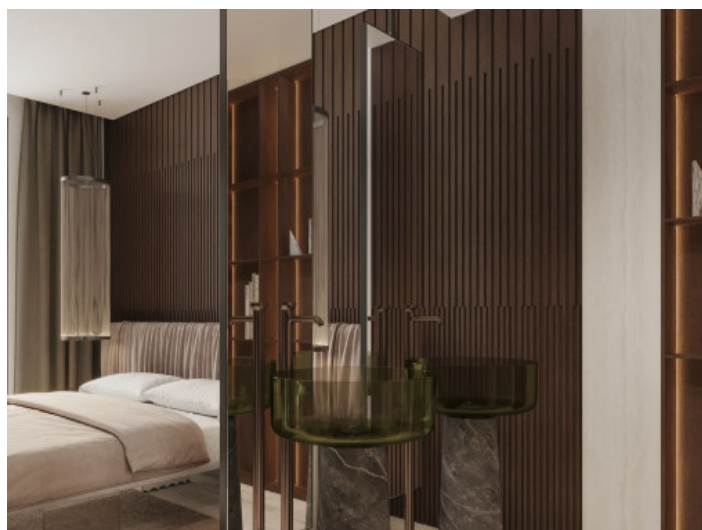
Dining room



One of 3 bedrooms



Bedroom



Bedroom



Dressing area



Bathroom

All information is correct to the best of our knowledge. Errors and prior sale excepted. This prospectus is purely for information purposes. Only the notarized deed of sale is legally binding.

Paseo Marítimo
Reference 121553G



SPA



Indoor pool



SPA



Cinema



Gym



Wine cellar

All information is correct to the best of our knowledge. Errors and prior sale excepted. This prospectus is purely for information purposes. Only the notarized deed of sale is legally binding.

PORTA MALLORQUINA • THERESIENSTR.: 81, 80333 MUNICH
TEL. +34 971 698 242 • INFO@PORTAMALLORQUINA.COM

A modern, minimalist building with a flat roof and large glass windows. The building is a light beige color. In the foreground, there is a large outdoor lounge area with a brown sectional sofa, a small round table, and a fire pit. The area is paved with light-colored tiles. The sky is clear and blue.



KITCHEN
WATERCOOKERS
SMART CONTROL GLASS
EXTERIOR SEATING
COMMUNITY POOL
COMMUNITY SPA
COMMUNITY GYM
ACADEMATIC

XOJAY **GW**

100' 0" 200' 0" 300' 0" 400' 0" 500' 0"

XOJONQUET
 THE PARK RESIDENCES

2D APARTMENT 2

APARTMENT 2 AREA	1,000 SF
APARTMENT 2 PERIMETER	100' 0"
APARTMENT 2 PERIMETER	100' 0"
APARTMENT 2 PERIMETER	100' 0"
APARTMENT 2 PERIMETER	100' 0"

3D APARTMENT 2

APARTMENT 2 AREA	1,000 SF
APARTMENT 2 PERIMETER	100' 0"
APARTMENT 2 PERIMETER	100' 0"
APARTMENT 2 PERIMETER	100' 0"
APARTMENT 2 PERIMETER	100' 0"

3D APARTMENT 2

APARTMENT 2 AREA	1,000 SF
APARTMENT 2 PERIMETER	100' 0"
APARTMENT 2 PERIMETER	100' 0"
APARTMENT 2 PERIMETER	100' 0"
APARTMENT 2 PERIMETER	100' 0"

XOJAY

KITCHEN
WALK-IN CLOSET
SOLAR CONTROL GLASS
EXTERIOR SHUTTERS
COMMUNITY POOL
COMMUNITY SPA
COMMUNITY GYM
AC/HEATING

UNIT FEATURES

REAR TERRACE FLOOR AREA	700.0
REAR TERRACE FLOOR AREA	800.0
CLIMATE CONTROL FLOOR AREA	900.0
REAR TERRACE FLOOR AREA	1000.0
REAR TERRACE FLOOR AREA	1100.0

UNIT FEATURES

UNIT	SQ. FT.
REAR TERRACE	700.0
CLIMATE CONTROL FLOOR AREA	900.0
REAR TERRACE	1000.0
REAR TERRACE	1100.0
REAR TERRACE	1200.0
REAR TERRACE	1300.0
REAR TERRACE	1400.0
REAR TERRACE	1500.0
REAR TERRACE	1600.0
REAR TERRACE	1700.0
REAR TERRACE	1800.0
REAR TERRACE	1900.0
REAR TERRACE	2000.0
REAR TERRACE	2100.0
REAR TERRACE	2200.0
REAR TERRACE	2300.0
REAR TERRACE	2400.0
REAR TERRACE	2500.0
REAR TERRACE	2600.0
REAR TERRACE	2700.0
REAR TERRACE	2800.0
REAR TERRACE	2900.0
REAR TERRACE	3000.0
REAR TERRACE	3100.0
REAR TERRACE	3200.0
REAR TERRACE	3300.0
REAR TERRACE	3400.0
REAR TERRACE	3500.0
REAR TERRACE	3600.0
REAR TERRACE	3700.0
REAR TERRACE	3800.0
REAR TERRACE	3900.0
REAR TERRACE	4000.0
REAR TERRACE	4100.0
REAR TERRACE	4200.0
REAR TERRACE	4300.0
REAR TERRACE	4400.0
REAR TERRACE	4500.0
REAR TERRACE	4600.0
REAR TERRACE	4700.0
REAR TERRACE	4800.0
REAR TERRACE	4900.0
REAR TERRACE	5000.0
REAR TERRACE	5100.0
REAR TERRACE	5200.0
REAR TERRACE	5300.0
REAR TERRACE	5400.0
REAR TERRACE	5500.0
REAR TERRACE	5600.0
REAR TERRACE	5700.0
REAR TERRACE	5800.0
REAR TERRACE	5900.0
REAR TERRACE	6000.0
REAR TERRACE	6100.0
REAR TERRACE	6200.0
REAR TERRACE	6300.0
REAR TERRACE	6400.0
REAR TERRACE	6500.0
REAR TERRACE	6600.0
REAR TERRACE	6700.0
REAR TERRACE	6800.0
REAR TERRACE	6900.0
REAR TERRACE	7000.0
REAR TERRACE	7100.0
REAR TERRACE	7200.0
REAR TERRACE	7300.0
REAR TERRACE	7400.0
REAR TERRACE	7500.0
REAR TERRACE	7600.0
REAR TERRACE	7700.0
REAR TERRACE	7800.0
REAR TERRACE	7900.0
REAR TERRACE	8000.0
REAR TERRACE	8100.0
REAR TERRACE	8200.0
REAR TERRACE	8300.0
REAR TERRACE	8400.0
REAR TERRACE	8500.0
REAR TERRACE	8600.0
REAR TERRACE	8700.0
REAR TERRACE	8800.0
REAR TERRACE	8900.0
REAR TERRACE	9000.0
REAR TERRACE	9100.0
REAR TERRACE	9200.0
REAR TERRACE	9300.0
REAR TERRACE	9400.0
REAR TERRACE	9500.0
REAR TERRACE	9600.0
REAR TERRACE	9700.0
REAR TERRACE	9800.0
REAR TERRACE	9900.0
REAR TERRACE	10000.0

XOJAY

XOJONQUET

THE PARK RESIDENCES

APARTMENT

25

All information is correct to the best of our knowledge. Errors and prior sale excepted. This prospectus is purely for information purposes. Only the notarized deed of sale is legally binding.

Paseo Maritimo

Reference 121553G



Dining room

All information is correct to the best of our knowledge. Errors and prior sale excepted. This prospectus is purely for information purposes. Only the notarized deed of sale is legally binding.

PORTA MALLORQUINA • THERESIENSTR.: 81, 80333 MUNICH
TEL. +34 971 698 242 • INFO@PORTAMALLORQUINA.COM