

Paseo Marítimo
Reference 121553F



Duplex Garten Apartment im Villenstil mit Terrasse und Garten in Jonquet

constructed area:	404 m ²	swimming pool:	✓
bedrooms:	4	energy certificate:	in process
bathrooms:	4		
balcony/terrace:	✓		
sea view:	-	price:	€ 3,780,000.-



Paseo Maritimo

Reference 121553F



Details:

In El Jonquet, a hillside neighborhood that exudes the old-world charm of a former fishing village, a unique construction project with 57 units spread over 3 buildings is currently under construction.

These exclusive residences offer incomparable living comfort for people who are seeking a special domicile. Thanks to the excellent location, the port of Palma and the famous, lively districts of the city are within easy walking distance.

The duplex garden apartment has a generous constructed area of 404 sqm distributed over 2 levels. It includes 4 bedrooms and 4 bathrooms, 3 of which are en suite. In addition, the apartment has private parking for 2 cars. Absolute highlights are provided by a large private inner patio and the covered terrace, providing ample space for outdoor leisure activities and flooding the interior of the house with natural light.

Offered are 2 exclusive equipment packages of the highest quality, both promising an incomparable living experience. In addition, customised upgrade packages allow the apartments to be individually adapted to the requirements of their residents.

XO JONQUET - the park residences offers exceptional comfort and luxury with an impressive range of amenities. These include an exclusive spa and wellness area with indoor and outdoor pools, a fitness room, a private cinema, car wash facility, a golf simulator and a wine cellar. In addition, an in-house service and a community boat are available to offer residents an incomparable living experience.

Paseo Marítimo

Reference 121553F

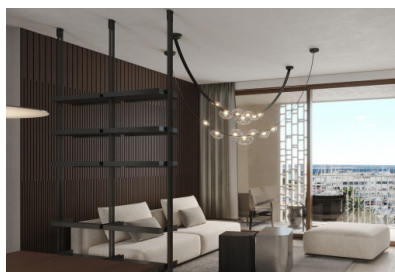


Location & surrounding area:

The Paseo Marítimo forms the borderline from the capital Palma towards the water and extends on about 6 kilometres from the military port of Porto Pi in the west, along the historic centre, the antique pier, the cathedral till the fisher harbour of Portixol in the east. Whilst some people take the bicycle or the roller blades, others are jogging or simply walk; all of them are enjoying meanwhile the fresh breeze on the waterfront. The promenade of Palma is one of the favoured meeting points for the people of the island and the life not only vibrates during the day. The attractive nightlife offers different kind of hip dancing clubs, fancy pubs, coffee shops and restaurants for each taste. Sunny residential apartment blocks, south orientated, with views to the marinas with its floating yachts, define the image of the Paseo Marítimo.

Paseo Maritimo

Reference 121553F



Outdoor area on the first floor



Terrace



SPA reception



Reception



Reception entrance of the building

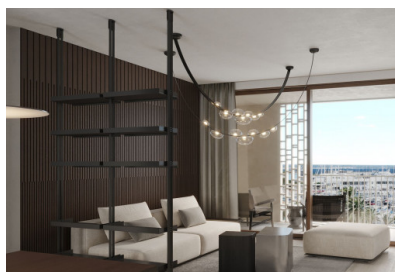


Reception

All information is correct to the best of our knowledge. Errors and prior sale excepted. This prospectus is purely for information purposes. Only the notarized deed of sale is legally binding.

Paseo Marítimo

Reference 121553F



Living room



Living room



Dining room



Dining room



Dining room



Dining room

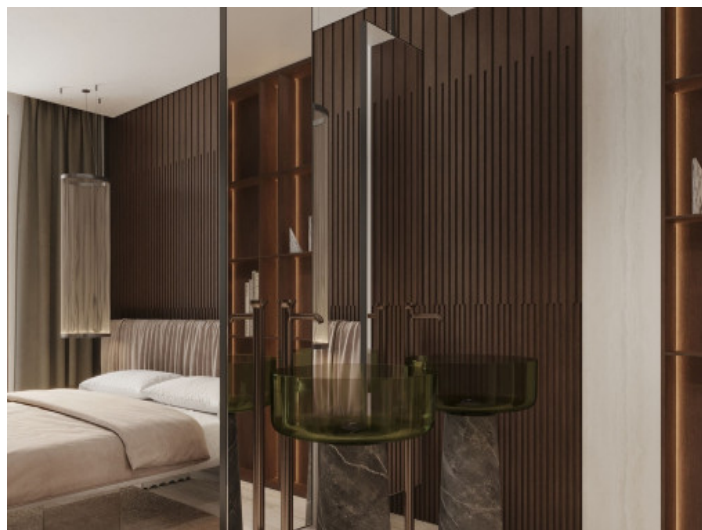
All information is correct to the best of our knowledge. Errors and prior sale excepted. This prospectus is purely for information purposes. Only the notarized deed of sale is legally binding.

PORTA MALLORQUINA • THERESIENSTR.: 81, 80333 MUNICH
TEL. +34 971 698 242 • INFO@PORTAMALLORQUINA.COM

Paseo Maritimo
Reference 121553F



One of 4 bedrooms



Bedroom with sink



Bedroom



Bedroom



Dressing room



One of 4 bathrooms

All information is correct to the best of our knowledge. Errors and prior sale excepted. This prospectus is purely for information purposes. Only the notarized deed of sale is legally binding.

Paseo Marítimo

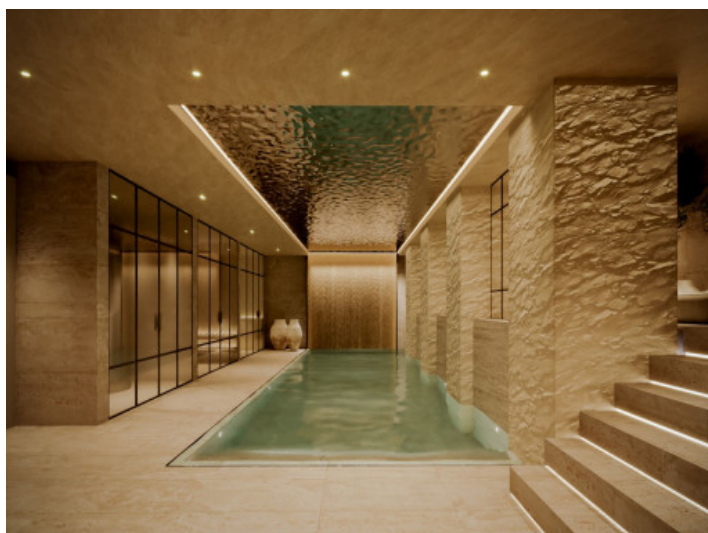
Reference 121553F



Golf simulator



Fitness area



SPA



Indoor pool



SPA



Social Club

All information is correct to the best of our knowledge. Errors and prior sale excepted. This prospectus is purely for information purposes. Only the notarized deed of sale is legally binding.

PORTA MALLORQUINA • THERESIENSTR.: 81, 80333 MUNICH
TEL. +34 971 698 242 • INFO@PORTAMALLORQUINA.COM



1M

1,000 sq. ft.

2 bedrooms

2 bathrooms

Living area

Kitchen

Dining area

Bedroom

Bathroom

Storage

Walk-in closet

Stainless steel appliances

Hardwood floors

Central air conditioning

Walk-in pantry

Stainless steel sink

Stainless steel refrigerator

Stainless steel oven

Stainless steel dishwasher

Stainless steel range hood

Stainless steel faucet

Stainless steel handles

Stainless steel knobs

Stainless steel pulls

Stainless steel trim

Stainless steel baseboards

Stainless steel踢脚线

Stainless steel door frames

Stainless steel window frames

Stainless steel light fixtures

Stainless steel switches

Stainless steel outlets

Stainless steel phone jacks

Stainless steel data ports

Stainless steel fire alarm pull stations

Stainless steel fire alarm reset buttons

Stainless steel fire alarm test buttons

Stainless steel fire alarm trouble indicators

Stainless steel fire alarm control panels

Stainless steel fire alarm sounders

Stainless steel fire alarm horns

Stainless steel fire alarm bells

Stainless steel fire alarm sirens

Stainless steel fire alarm whistles

Stainless steel fire alarm buzzers

Stainless steel fire alarm chimes

Stainless steel fire alarm gongs

Stainless steel fire alarm bells

Stainless steel fire alarm sirens

Stainless steel fire alarm whistles

Stainless steel fire alarm buzzers

Stainless steel fire alarm chimes

Stainless steel fire alarm gongs

KITCHEN

WALK-IN PANTRY

SMART COOKTOP, GLASS

EXTENSIVE CABINETS

COMMUNITY POOL

COMMUNITY GYM

COMMUNITY GYM

ACCOMMODATIONS

XOJ

1000 sq. ft.

2 bedrooms

2 bathrooms

Living area

Kitchen

Dining area

Bedroom

Bathroom

Storage

Walk-in closet

Stainless steel appliances

Hardwood floors

Central air conditioning

Walk-in pantry

Stainless steel sink

Stainless steel refrigerator

Stainless steel oven

Stainless steel dishwasher

Stainless steel range hood

Stainless steel faucet

Stainless steel handles

Stainless steel knobs

Stainless steel pulls

Stainless steel trim

Stainless steel baseboards

Stainless steel踢脚线

Stainless steel door frames

Stainless steel window frames

Stainless steel light fixtures

Stainless steel switches

Stainless steel outlets

Stainless steel phone jacks

Stainless steel data ports

Stainless steel fire alarm pull stations

Stainless steel fire alarm reset buttons

Stainless steel fire alarm test buttons

Stainless steel fire alarm trouble indicators

Stainless steel fire alarm control panels

Stainless steel fire alarm sounders

Stainless steel fire alarm horns

Stainless steel fire alarm bells

Stainless steel fire alarm sirens

Stainless steel fire alarm whistles

Stainless steel fire alarm buzzers

Stainless steel fire alarm chimes

Stainless steel fire alarm gongs

XOJONQUET

THE PARK RESIDENCES

1M

1,000 sq. ft.

2 bedrooms

2 bathrooms

Living area

Kitchen

Dining area

Bedroom

Bathroom

Storage

Walk-in closet

Stainless steel appliances

Hardwood floors

Central air conditioning

Walk-in pantry

Stainless steel sink

Stainless steel refrigerator

Stainless steel oven

Stainless steel dishwasher

Stainless steel range hood

Stainless steel faucet

Stainless steel handles

Stainless steel knobs

Stainless steel pulls

Stainless steel trim

Stainless steel baseboards

Stainless steel踢脚线

Stainless steel door frames

Stainless steel window frames

Stainless steel light fixtures

Stainless steel switches

Stainless steel outlets

Stainless steel phone jacks

Stainless steel data ports

Stainless steel fire alarm pull stations

Stainless steel fire alarm reset buttons

Stainless steel fire alarm test buttons

Stainless steel fire alarm trouble indicators

Stainless steel fire alarm control panels

Stainless steel fire alarm sounders

Stainless steel fire alarm horns

Stainless steel fire alarm bells

Stainless steel fire alarm sirens

Stainless steel fire alarm whistles

Stainless steel fire alarm buzzers

Stainless steel fire alarm chimes

Stainless steel fire alarm gongs

XOJAY

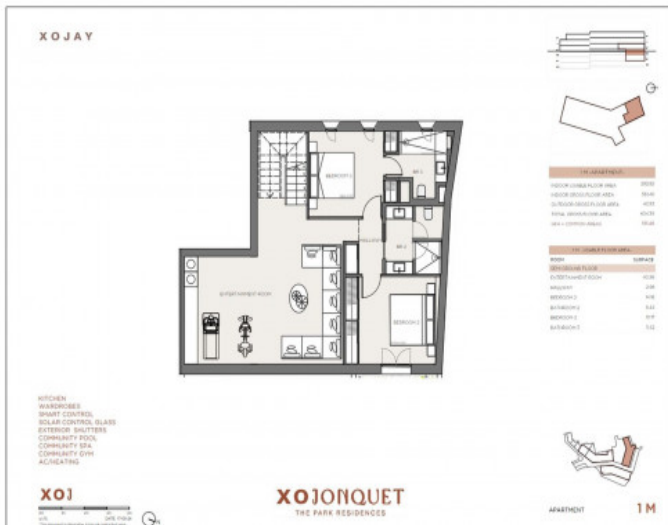
KITCHEN
WARDROBES
SMART CONTROL
SOLAR CONTROL GLASS
EXTENSIVE BATHS
COMMUNITY POOL
COMMUNITY SPA
COMMUNITY GYM
ACQUAHEAT

XOJ

[illegible]

All information is correct to the best of our knowledge. Errors and prior sale excepted. This prospectus is purely for information purposes. Only the notarized deed of sale is legally binding.

A modern interior design featuring a large, dark wood shelving unit with a curved metal frame, a white sofa, and a large window with a view of a city. The room is furnished with a white sofa, a coffee table, and a large window with a view of a city. The lighting is warm and ambient, with a chandelier and a floor lamp. The overall aesthetic is contemporary and sophisticated.



All information is correct to the best of our knowledge. Errors and prior sale excepted. This prospectus is purely for information purposes. Only the notarized deed of sale is legally binding.