

Son Espanyolet

Reference 118971A



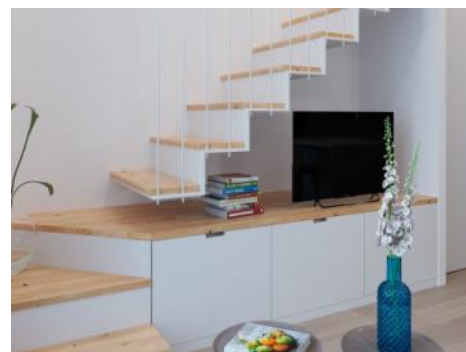

PORTA MALLORQUINA®
Your home. Our passion.

Newly-built maisonette-apartment with 2 balconies in Palma

constructed area: 76 m²
bedrooms: 1
bathrooms: 1
balcony/terrace: ✓
sea view: -

swimming pool: -
energy certificate: in process

price: € 530,000.-



Son Espanyolet

Reference 118971A



Details:

This new residential project foresees a total of 3 maisonette-apartments situated in one of Palma's most desirable areas, 'Son Espanyolet', located only a few minutes from the trendy district of Santa Catalina with its numerous bars and restaurants and the famous Palma Sport & Tennis Club.

The property stretches over the whole of the second and third levels, and due to its 2 terraces is flooded with ample natural light.

Both stairs and a convenient lift lead directly into the first floor of the apartment with a fully-equipped fitted kitchen with seating area, and the open living area with access to one of the terraces.

An internal staircase leads to the second part of the apartment with the main bedroom with its own covered balcony and bathroom en suite, and an office room.

Further features include air conditioning, heating, double-glazed windows and an integrated lift directly accessing the apartment.

Son Espanyolet

Reference 118971A



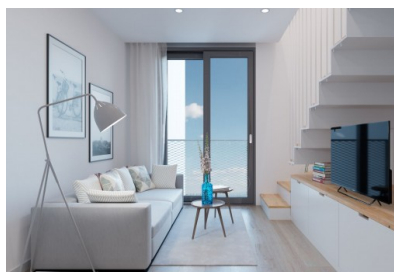
Location & surrounding area:

Son Espanyolet is a growing and charming area located right next to the trendy Santa Catalina district with the most diverse culinary offer of restaurants, bars and cafés that Palma has to offer. Despite its central location, Son Espanyolet is characterised by the quiet atmosphere you will find there. It is an ideal place to live away from the hustle and bustle of the big city, but still be surrounded by all kinds of amenities such as supermarkets, pharmacies, cafés, bars and restaurants. The Juaneda Private Hospital is also located in Son Espanyolet.

The famous Paseo Marítimo, the fantastic promenade that runs parallel to the coast of Palma and is ideal for walking, sports and enjoying restaurants and clubs, is also only a 7 minute walk away. With several schools nearby, this area is a popular choice for families. The area is a mixture of villas with gardens and low buildings. From many of the properties you can enjoy beautiful views of Bellver Castle, which is within walking distance and offers stunning views over the bay of Palma. Early risers can enjoy the sunrise over Palma here.

Son Espanyolet

Reference 118971A



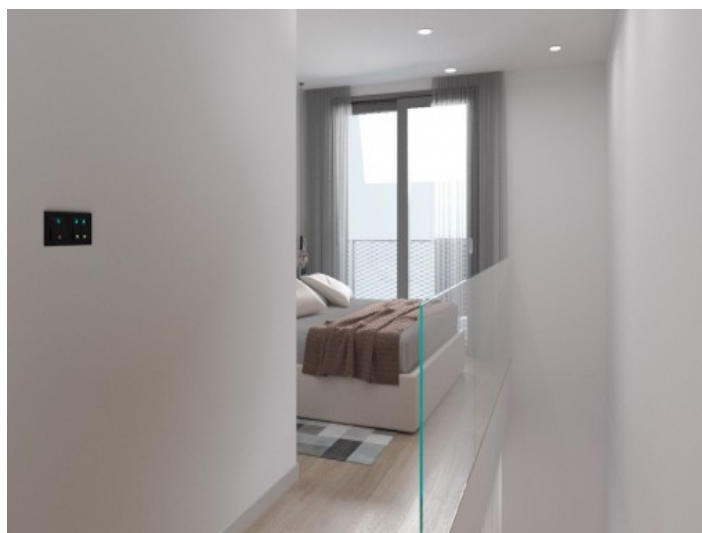
Living area and kitchen



Living area and kitchen



Staircase



Double bedroom



Double bedroom

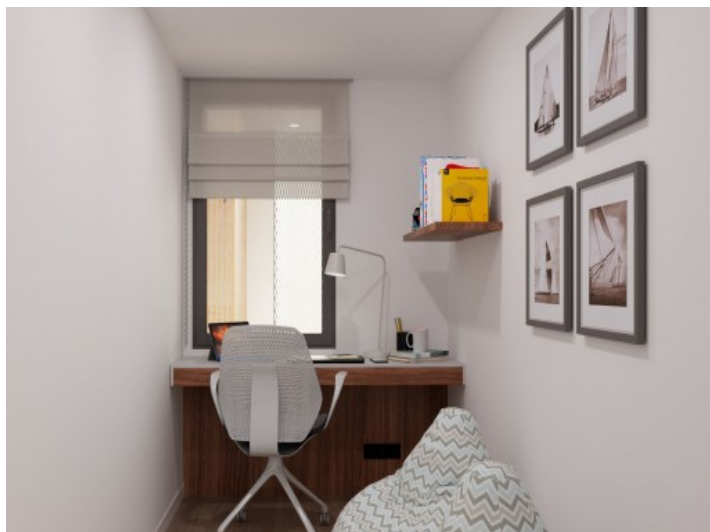
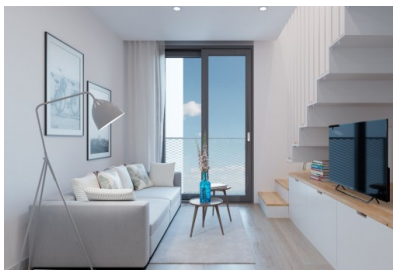


Bathroom with shoer

All information is correct to the best of our knowledge. Errors and prior sale excepted. This prospectus is purely for information purposes. Only the notarized deed of sale is legally binding.

Son Espanyolet

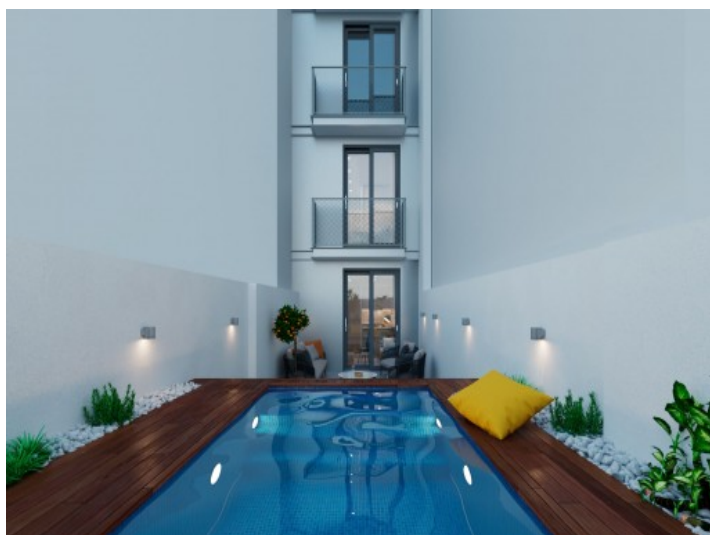
Reference 118971A



Guest room



Exterior view



Pool area

All information is correct to the best of our knowledge. Errors and prior sale excepted. This prospectus is purely for information purposes. Only the notarized deed of sale is legally binding.

PORTA MALLORQUINA • THERESIENSTR.: 81, 80333 MUNICH
TEL. +34 971 698 242 • INFO@PORTAMALLORQUINA.COM