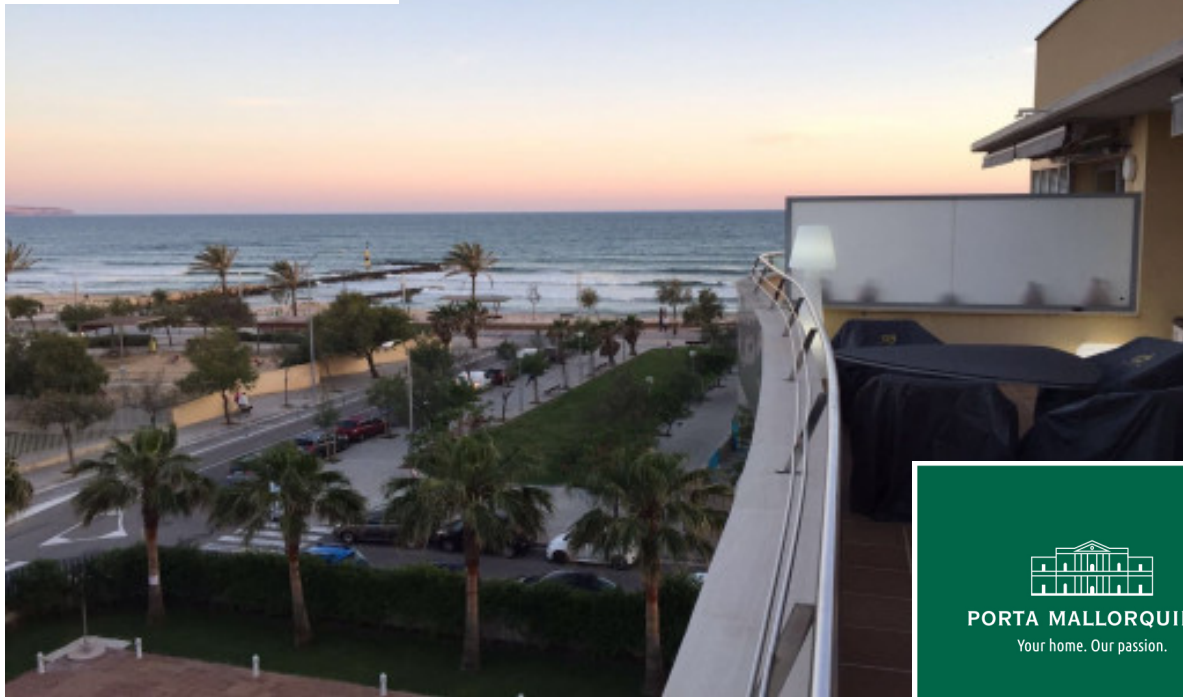


Molinar
Reference 118867



High-quality penthouse apartment with sea views and communal pool close to the beach in Molinar

constructed area:	160 m ²	swimming pool:	✓
bedrooms:	2	energy certificate:	in process
bathrooms:	2		
balcony/terrace:	✓		
sea view:	✓	long term rental*:	€ 3,900.-



* Agency fee: 1.7 monthly rent plus 21% VAT
Monthly rental fee - Rentals with contract period of minimum six months.

Molinar

Reference 118867



Details:

This high-quality penthouse-apartment with sea views is situated in a residential building with communal pool and lift in Palma's popular Es Molinar district. The beach promenade with its numerous cafes, restaurants and the sandy beach are only around 100 metres away.

The living area of approx. 90 sqm is distributed over a living/dining room with sea views, a kitchen, 2 bedrooms, 2 bathrooms, one of which is en suite, a hallway and a utility room. The living room accesses a 40 sqm terrace with sea views and there is also a second terrace of approx. 28 sqm.

Further features include parquet floors, aluminum windows with double glazing, aluminum shutters and hot/cold air conditioning.

Also included in the rental price are 2 parking spaces in the underground garage of the same building.

Molinar

Reference 118867



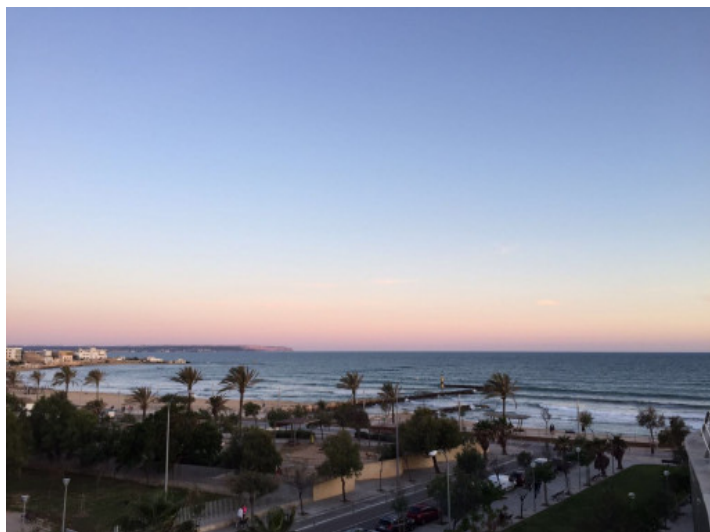
Location & surrounding area:

Portixol/Molinar is one of Palma's loveliest and most popular zones, both as a holiday destination and for real estate buyers.

Portixol is an old fishing harbour which has become one of the most popular areas of Palma, and its name means 'Harbour and Sun' in Mallorquin. It has excellent fish restaurants, great tapas bars and diverse cafes filled with life all year round and leaving no gastronomical wishes unfulfilled. Many are situated right on the sea with views of the small beach and the Club Nautic in Portixol. Sports enthusiasts such as cyclists, inline-skaters and walkers love the Paseo Maritimo which leads to Palma without gaps or interruptions, and the zone is completed by its many and varied shops and supermarkets and the large, modern sports centre.

Beach fans will also feel at home in the district of Portixol/Molinar. Both on Palma's town-beach Portixol with its very clean water but also in the small charming bays which can be found on the way from Molinar to Palma.

Molinar
Reference 118867



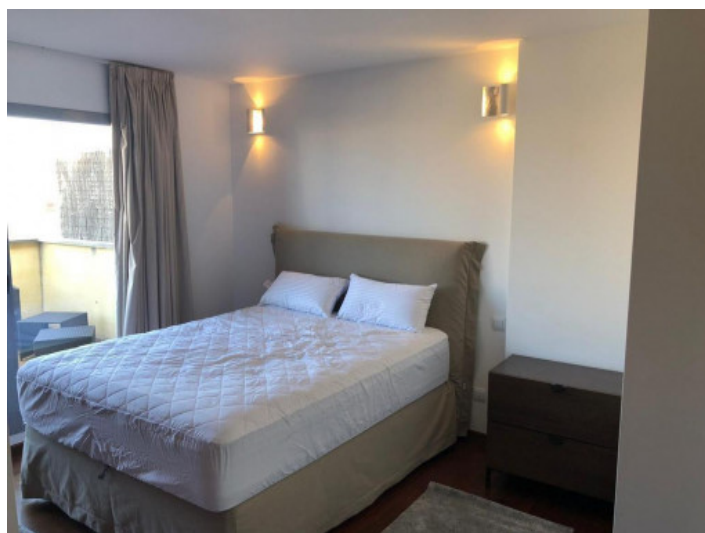
Sea views



Terrace



Living area



Bedroom



Terrace



Pool area

All information is correct to the best of our knowledge. Errors and prior sale excepted. This prospectus is purely for information purposes. Only the notarized deed of sale is legally binding.

PORTA MALLORQUINA • THERESIENSTR.: 81, 80333 MUNICH
TEL. +34 971 698 242 • INFO@PORTAMALLORQUINA.COM