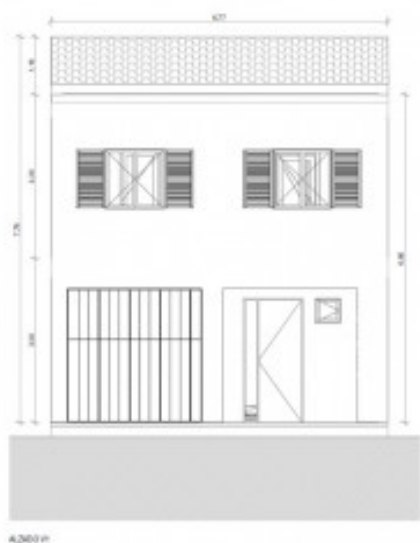


Llucmajor

Reference 119993



PORTA MALLORQUINA®

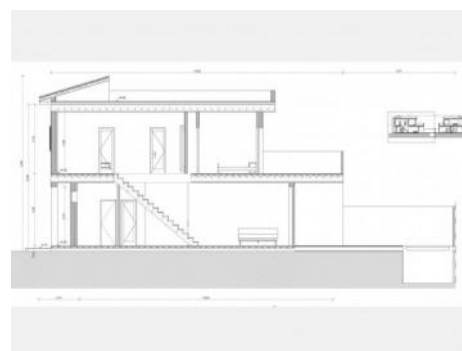
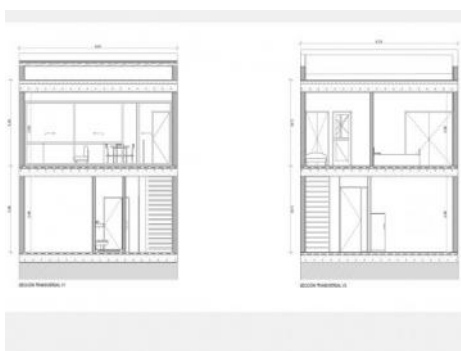
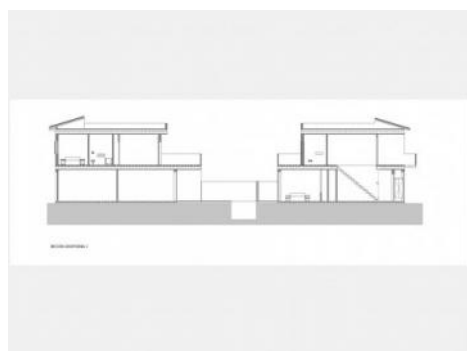
Your home. Our passion.

Project for a town-house with 2 separate houses and pool in Llucmajor

constructed area: 342 m²
plot area: 244 m²
bedrooms: 5
bathrooms: 4
sea view: -

energy certificate: in process

price: € 1,100,000.-



Llucmajor

Reference 119993



Details:

This modern townhouse project in Llucmajor is currently under construction with completion foreseen by the end of 2024.

In this version both townhouses will be sold together with a pool between, 2 garages, 2 kitchens if required, 5 bedrooms with 4 bathrooms, and 2 separate WC's. The houses have a total living space 341.71 sqm spread over 2 floors, on a plot area of 244 sqm.

In the first house the bedrooms are on the first floor, and on the ground floor is the kitchen and a large, open living space with a flowing transition to the external area and the pool with south-facing terrace.

The bedrooms in the second house are situated on the ground floor, and on the upper level is the living area with kitchen and terraces on both sides flooding the house with natural light..

Both houses combined to make a single living unit would undoubtedly present a very interesting combination offering ample space and comfort with great investment potential.

Further features include underfloor heating with air/heat pump, and air conditioning.

Llucmajor

Reference 119993



Location & surrounding area:

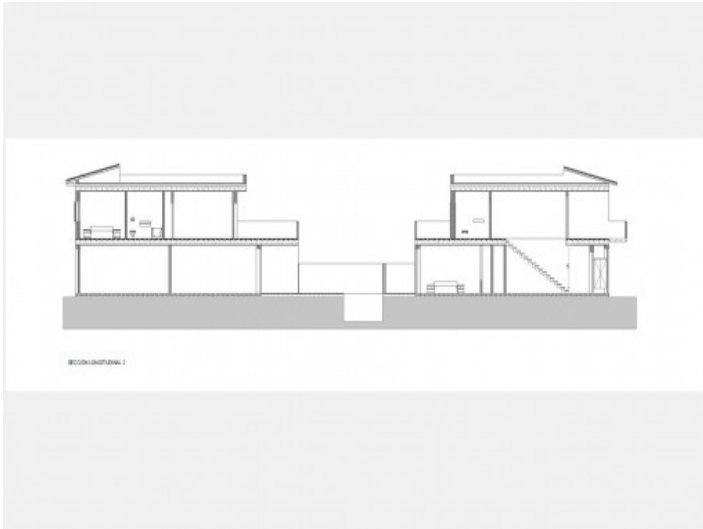
In terms of surface area, Llucmajor is the largest municipal county on the island of Majorca and is located in the south. Its population amounts to 20,000 inhabitants.

The small city includes 4 supermarkets, some well loved cafés and tapa-bars, and even a thrice-weekly fruit and vegetable market, taking place in the very recently renovated town centre, with its Plaza de España and the second largest church on the island.

The picturesque hill-location of Randa on the mountain of the same name, which is the most elevated point in the island's centre, houses three sanctuaries, and is located slightly north of the town. Llucmajor has developed into an economic and popular residential location, due to the new motor-way connection to Palma. The Marriott Son Antem Golf Resort and Spa, and nearby yacht clubs make Llucmajor an interesting and central location for planning pass-times and excursions.

The Es Trenc natural beach, one of the nicest on the island and with a Caribbean similarity, lies just 15 car minutes from Llucmajor.

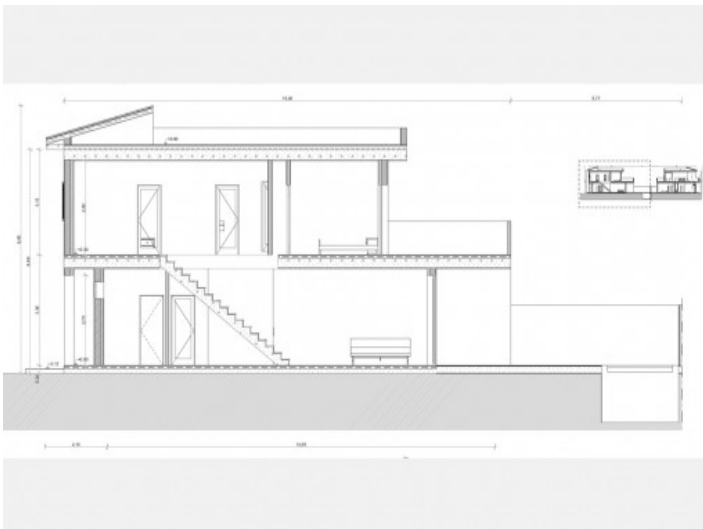
Llucmajor
Reference 119993



Floor plan



Floor plan



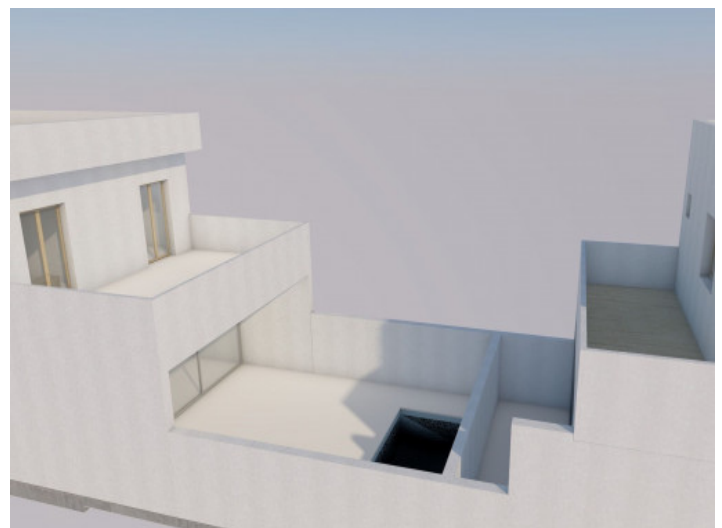
Floor plan



Floor plan



Floor plan



Plan

All information is correct to the best of our knowledge. Errors and prior sale excepted. This prospectus is purely for information purposes. Only the notarized deed of sale is legally binding.