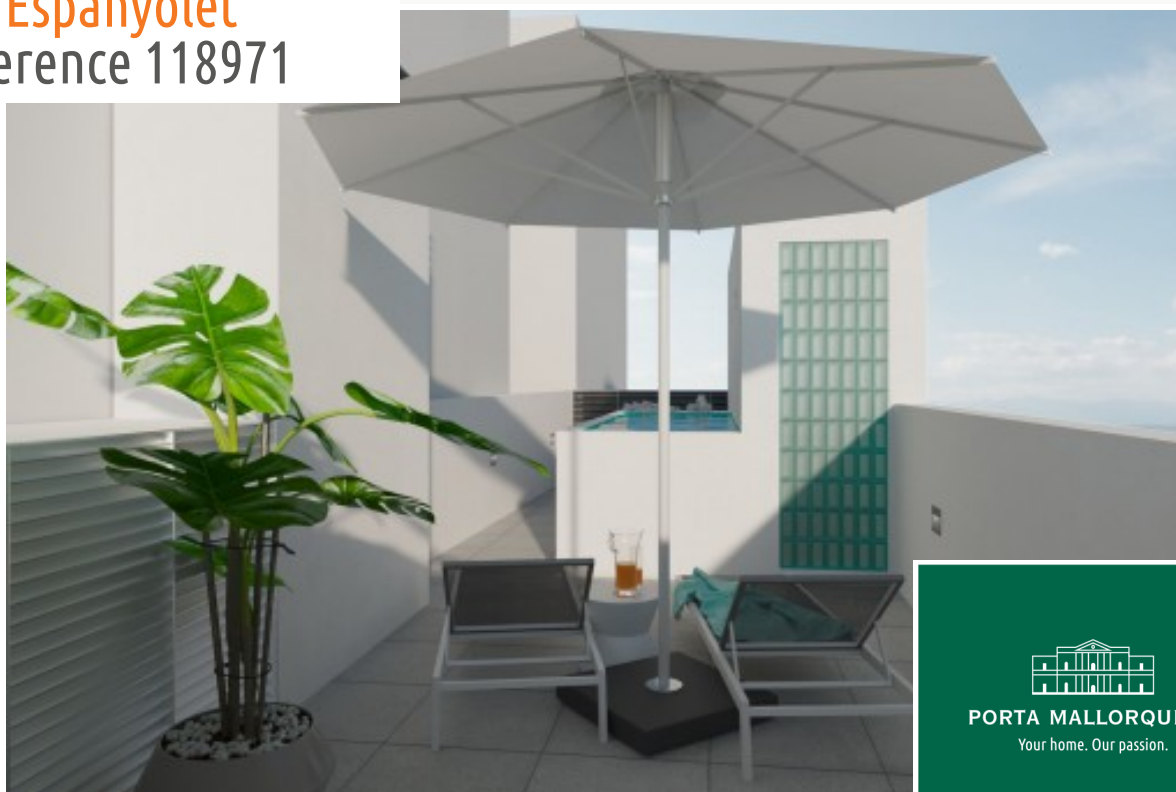


Son Espanyolet

Reference 118971




PORTA MALLORQUINA®
Your home. Our passion.

Newly-built duplex penthouse-apartment with private roof terrace and its own pool in Palma

constructed area:	96 m ²	swimming pool:	✓
bedrooms:	2	energy certificate:	in process
bathrooms:	2		
balcony/terrace:	✓		
sea view:	-	price:	€ 790,000.-



Son Espanyolet Reference 118971



Details:

This new residential project with a total of 3 maisonette apartments is situated in one of Palma's most desirable areas. in 'Son Espanyolet'. It is located only a few minutes from the trendy neighbourhood of Santa Catalina with its numerous bars and restaurants, and from the well-known Palma Sport & Tennis club.

The duplex penthouse stretches over the total area of the 4th and 5th floors and has a private roof terrace on the 6th level.

Both stairs and a convenient lift directly access the apartment. On the first level is an office room, and the main bedroom with en-suite bathroom which accesses a covered terrace.

An internal staircase leads to the second part of the property with a fitted kitchen with adjoining, open living/dining area, and a further bedroom with its own balcony. An absolute highlight is the private sun terrace with its own pool and ample space for terrace-furniture.

Further features include air conditioning, heating, double-glazed windows, and an integrated lift directly accessing the apartment.

Son Espanyolet Reference 118971



Location & surrounding area:

Son Espanyolet is a growing and charming area located right next to the trendy Santa Catalina district with the most diverse culinary offer of restaurants, bars and cafés that Palma has to offer. Despite its central location, Son Espanyolet is characterised by the quiet atmosphere you will find there. It is an ideal place to live away from the hustle and bustle of the big city, but still be surrounded by all kinds of amenities such as supermarkets, pharmacies, cafés, bars and restaurants. The Juaneda Private Hospital is also located in Son Espanyolet.

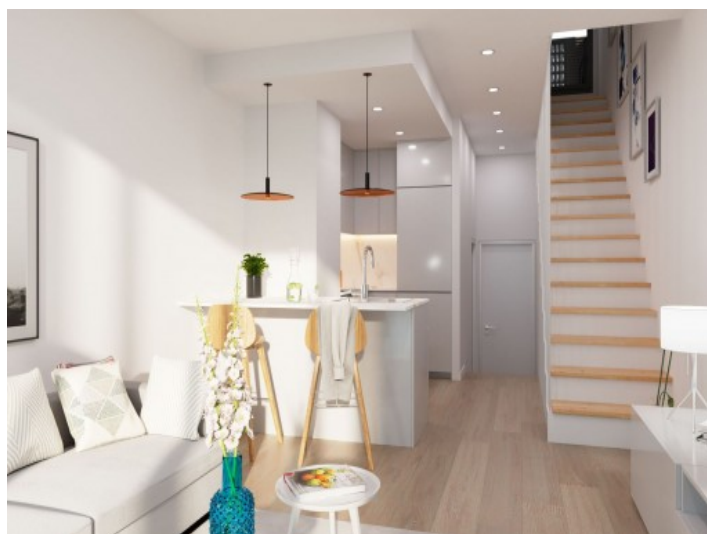
The famous Paseo Marítimo, the fantastic promenade that runs parallel to the coast of Palma and is ideal for walking, sports and enjoying restaurants and clubs, is also only a 7 minute walk away. With several schools nearby, this area is a popular choice for families. The area is a mixture of villas with gardens and low buildings. From many of the properties you can enjoy beautiful views of Bellver Castle, which is within walking distance and offers stunning views over the bay of Palma. Early risers can enjoy the sunrise over Palma here.

Son Espanyolet

Reference 118971



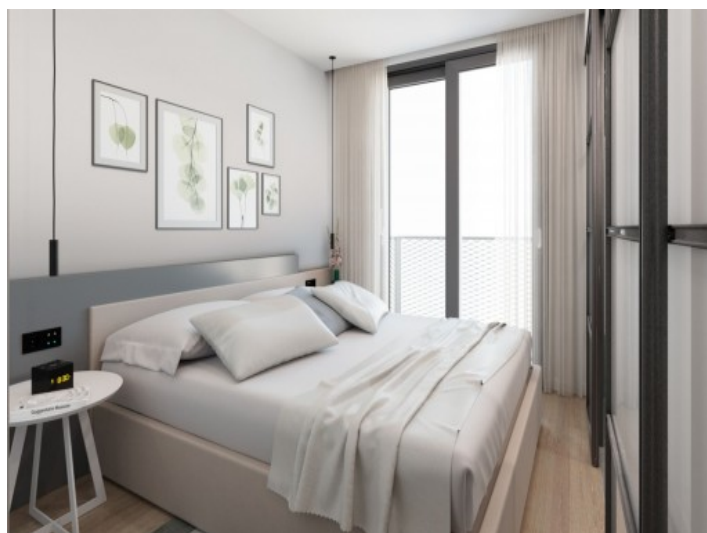
Exterior view



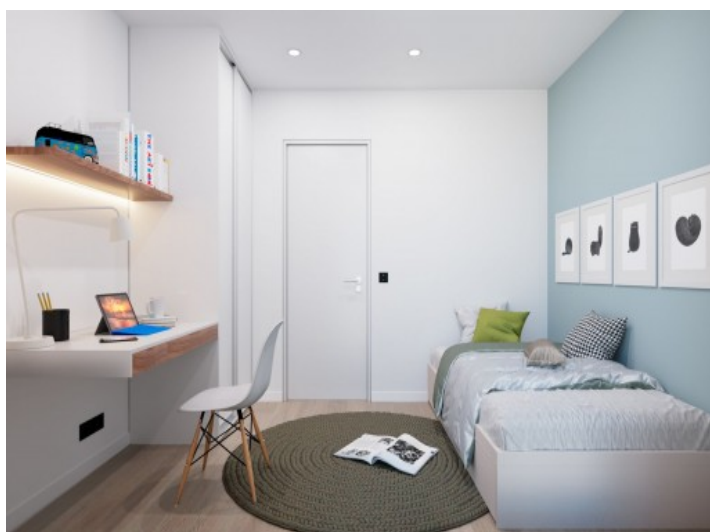
Living and dining area



Living area



Bedroom



Bedroom



Bathroom

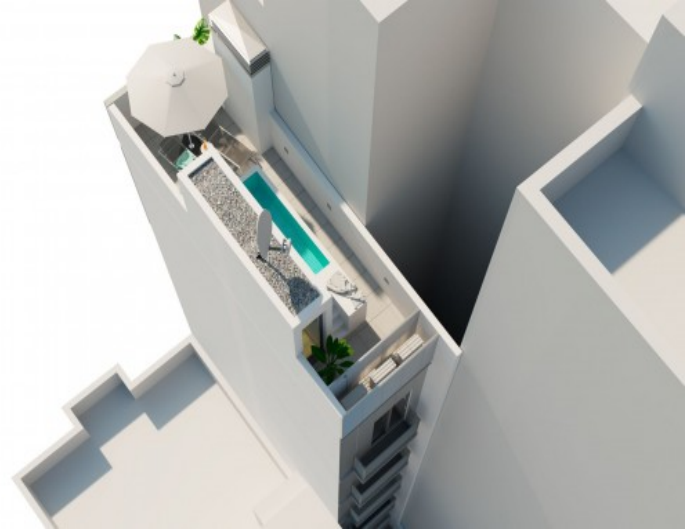
All information is correct to the best of our knowledge. Errors and prior sale excepted. This prospectus is purely for information purposes. Only the notarized deed of sale is legally binding.

Son Espanyolet

Reference 118971



Roof terrace



View from above

All information is correct to the best of our knowledge. Errors and prior sale excepted. This prospectus is purely for information purposes. Only the notarized deed of sale is legally binding.